

BATTERY ISOLATORS

ISOLATOR LOCKOUT BRACKET (Part No. 1103)

The isolator lockout bracket is designed to create a safer working environment for maintenance staff and increases security for mobile equipment. This bracket suits the common Cole Hersee/Britax style battery isolators and provides a positive lockout in the off position. This ensures the safety of staff working on or around the machine and decreases the likelihood of theft.



Part No. 1103

Isolator lockout bracket

ISOLATOR DUAL POLE (Part No. 1700)

A weather resistant dual pole master disconnect switch (battery isolator). This switch is constructed from plated steel and has an indexing pin to align the unit and prevent rotation. The operating shaft is o-ring sealed and the terminal insulator is sealed with a gasket.

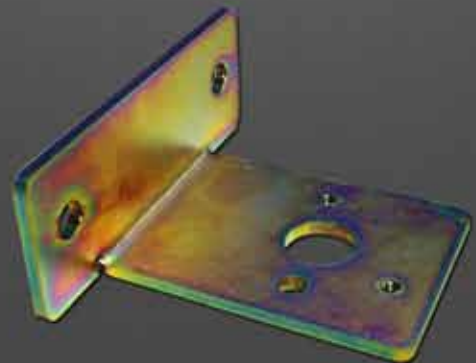


Part No. 1700

Isolator dual pole

ISOLATOR MOUNT (Part No. 4300)

The isolator mounting bracket is made from plated steel. The bracket can be welded to the vehicle or bolted on utilising the 2 x 10mm diameter mounting holes (85mm centres).



Part No. 4300

Isolator mount



Manufactured or distributed by:



PERTH

Unit 2-5/511 Abernethy Road
Kewdale Western Australia 6105
Ph: +61 8 9353 6577
Fax: +61 8 9353 6578

KALGOORLIE

24 Percy Road
Kalgoorlie Western Australia 6430
Ph: +61 8 9021 1600
Fax: +61 8 9091 4927

MT ISA

1A Ryan Road
Mt Isa Queensland 4825
Ph: +61 7 4749 0233
Fax: +61 7 4749 0232

BRISBANE

Unit 6/26 Flinders Parade
North Lakes QLD 4509
Ph: +61 7 338 50172
Fax: +61 7 338 50173

MELBOURNE OFFICE: +61 3 9545 5859

www.rct.net.au
sales@rct.net.au

Copyright© Remote Control Technologies Pty Ltd