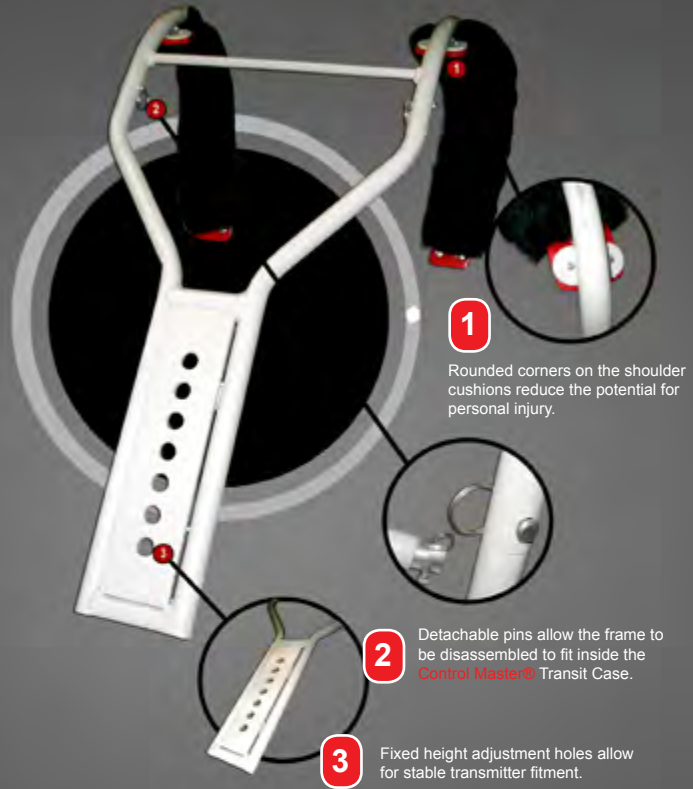


IMPROVEMENTS TO PORTABLE REMOTE CONTROL CARRY FRAME AND BASE

The new portable remote control carry frame and base integrates a host of new innovations designed to improve the portability, usability and comfort of the frame during remote control operations. The three piece assembly design allows for quick dismantling, reassembling and is small enough to fit in the **Control Master®** Transit Case. The fixed height adjustment holes provide greater remote control stability. The non-removable anti-luce latch eliminates the possibility of losing the retaining plate and screw (found on earlier versions) while adjusting the height of the transmitter or during transit. The carry frame and base are manufactured using lightweight powder coated aluminium, ensuring they can withstand even the harshest of handling and environmental conditions.

The new portable remote control carry frame and base have been engineered to meet evolving customer demands.



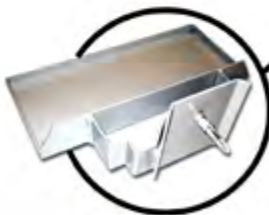
Part No. 4494

Portable carry frame & base



Non-removable anti-luce latch allows for greater stability and a quick and easy height adjustment.

Part No. 4495



The base is specifically moulded to fit a CM2000D remote control transmitter and portable lead acid battery.



Holes on the base allow for additional carry handles to be fitted.

Manufactured by:



PERTH

Unit 2-5/511 Abernethy Road
Kewdale Western Australia 6105
Ph: +61 8 9353 6577
Fax: +61 8 9353 6578

KALGOORLIE

24 Percy Road
Kalgoorlie Western Australia 6430
Ph: +61 8 9021 1600
Fax: +61 8 9091 4927

MT ISA

1A Ryan Road
Mt Isa Queensland 4825
Ph: +61 7 4749 0233
Fax: +61 7 4749 0232

BRISBANE OFFICE: +61 7 3880 1231 **MELBOURNE OFFICE:** +61 3 9545 5859

www.rct.net.au

sales@rct.net.au

Copyright© Remote Control Technologies Pty Ltd